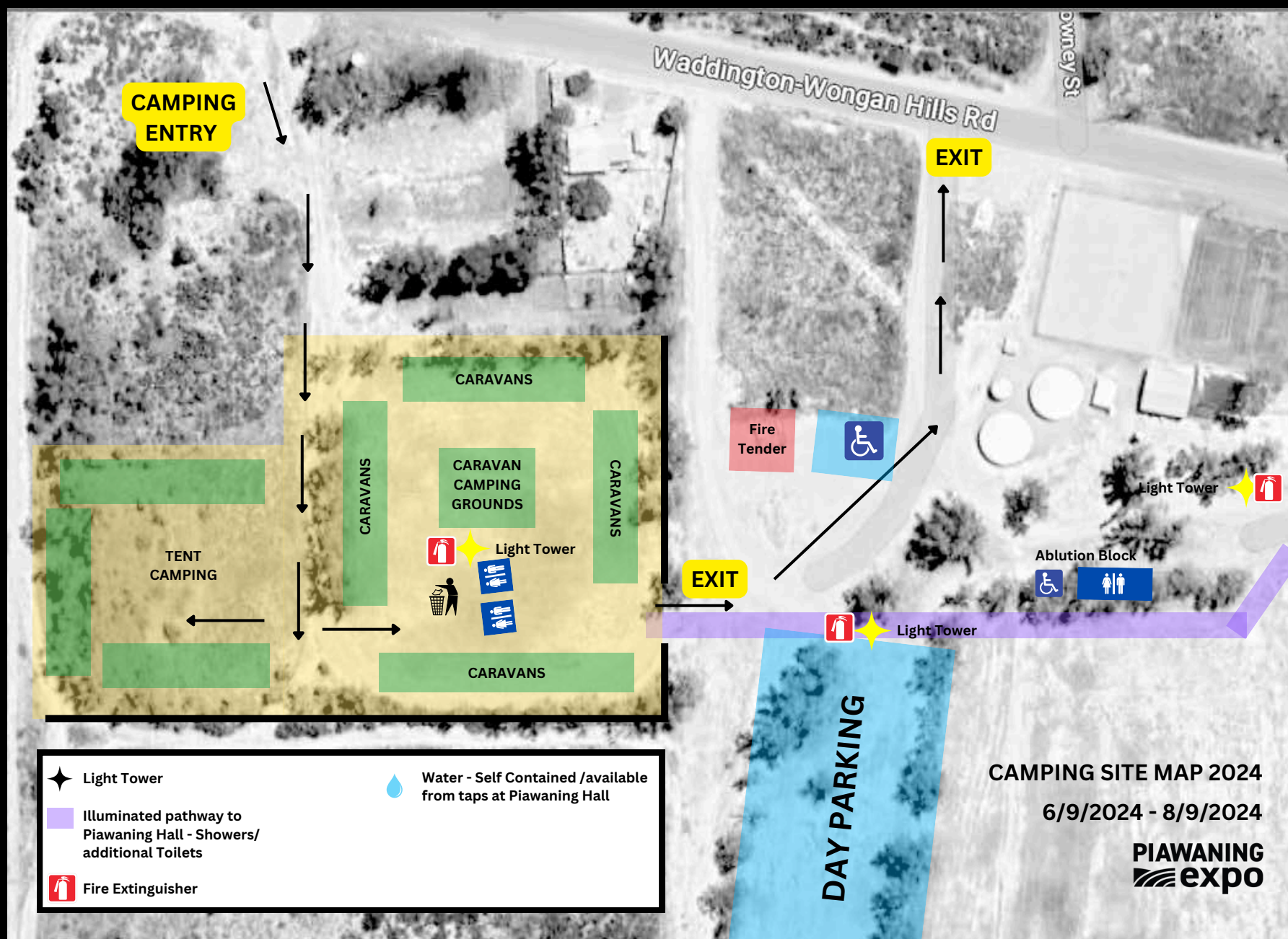


PIAWANING
 expo

CAMPING GUIDE

CAMPING MAP



Light Tower Illuminated pathway to Piawaning Hall - Showers/ additional Toilets Fire Extinguisher	Water - Self Contained /available from taps at Piawaning Hall
---	---

CAMPING SITE MAP 2024
6/9/2024 - 8/9/2024

CAMPING INFORMATION

Camping Dates:

Arrival: from midday Friday, September 6th, 2024

Departure: Sunday, September 8th, 2024, with the last person off-site by 5 pm.

Facilities:

- Unpowered camping
- No dump point - closest Calingiri, Wongan Hills, Moora
- Lighting tower, rubbish bins, portable toilets.
- No camp kitchen.
- Additional toilets at Piawaning Hall and Event Grounds
- Showers: 1 Male, 1 Female (Limited ease of access once expo opens at 10am)
- Portable water available from Piawaning Hall.

CAMPING RULES:

Please be respectful of other people camping nearby. Be courteous, safe and responsible at all times.

No Fires

No BYO Alcohol into Expo Grounds.

Bar opens on Saturday from 3pm at the Hall.

Food vans will be serving up until 7pm on Saturday Evening.

1 food van will stay for Sunday morning serving coffee and breakfast.

